

Specifications of DocuPrint C3300 DX

Print Functions

Print Speed	Simplex	Up to 30 ppm colour and black & white (A4)
	Duplex	Up to 20 ipm colour and black & white (A4)
Print Resolution	600 x 600 dpi (multi-level); 1200 x 1200 dpi (2-level);	
First-Page-Out-Time	Less than 16 seconds (colour) / 13 seconds (black & white)	
Warm-up Time	Less than 30 seconds	
Memory (std/max)	256 MB/768 MB (256 MB + 512 MB)	
Processor	400 MHz	
PDL	PCL6, PCL5e, HBPL (for scanner), FX-PDF, XPS, Adobe® PostScript® 3™	
Hard Disk (optional)	40 GB	
Connectivity	USB 2.0, Ethernet 10/100Base-TX	
Operating System	Windows® 2000/XP (32 / 64-bit) / Vista® (32 / 64-bit) / Server® 2003 (32 / 64-bit) / Server® 2008 (32 / 64-bit), Mac OS X (10.3 - 10.5), Red Hat® Enterprise Linux® WS x4, SUSE® Linux® 10.0, Citrix XenApp™, SAP® R/3®	
Input Paper Size	Bypass Tray: A4, B5, A5, Legal (8.5 × 14"), Folio (8.5 × 13"), Letter (8.5 × 11"), Executive (7.25 × 10.5"), envelopes (Monarch, Corn 10, DL, C5), Custom (width 76.2 to 220.0 mm, length 98.4 to 355.6 mm) Paper Tray: A4, B5, A5, Legal (8.5 × 14"), Folio (8.5 × 13"), Letter (8.5 × 11"), Executive (7.25 × 10.5"), Custom (width 148.0 to 215.9 mm, length 210.0 to 355.6 mm)	
Input Paper Weight	Bypass Tray: Lightweight: 60 gsm; Heavyweight: 216 gsm Paper Tray: Lightweight: 60 gsm; Heavyweight: 216 gsm	
Media Input Capacity*	Standard	Paper tray: 550 sheets, Bypass tray: 150 sheets
	Optional	550-sheet feeder: 550 sheets
Media Output Capacity*	250 sheets (A4) face down	
Dimensions (W x D x H)	400 x 507 x 504 mm	
Weight	27.4 kg	
Power Supply	220 - 240 VAC, 50/60 Hz, 5 A (AP/Korea/China)	
Power Consumption	Maximum: 900 W; Printing: 420 W; Standby: 95 W, Sleep: 9 W or less (220-240 V), 7 W or less (110 V)	
Environment	Temperature: 10°C - 32°C (when printing); Humidity: 15% - 85% (when printing);	
Noise Levels	Standby mode: Less than 4.0 B Printing mode: Less than 7.0 B (7.4 B*)	
Warranty	Please check with your Fuji Xerox Printers reseller for more information.	

* Based on 64-gsm plain paper

† When using optional memory, hard disk and 550-sheet feeder

Consumables

Black (up to 6,000 pages*)		CT350670
Cyan (up to 4,000 pages*)		CT350671
Magenta (up to 4,000 pages*)		CT350672
Yellow (up to 4,000 pages*)		CT350673
Black (up to 9,000 pages*)		CT350674
Cyan (up to 9,000 pages*)		CT350675
Magenta (up to 9,000 pages*)		CT350676
Yellow (up to 9,000 pages*)		CT350677
Periodic Replacement Items	Fuser Unit* 220 V (up to 100,000 pages [†])	EL300729
	Belt Unit (up to 100,000 pages [†])	EL300727

* Average standard pages. Declared yield in accordance with ISO/IEC 19752. Yield will vary depending on image, area, coverage and print mode. Printer is shipped with one starter print cartridge with an average yield of 6,000 pages for black and 4,000 pages for cyan, magenta and yellow.

† Includes three feed rollers in the standard tray and three feed rollers in the optional tray.

* Declared yield based on an average job size of three letter- or A4-size pages. Yield will vary based on job length, media size, media type and orientation.

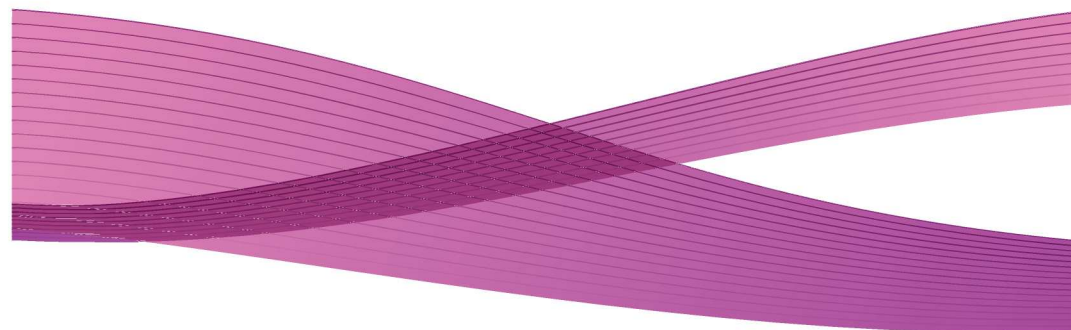
Accessories (optional)

550-sheet Feeder	A4, B5, A5, 148.5 x 210.0 to 215.9 x 355.6 mm Lightweight: 60 gsm; Heavyweight: 216 gsm	EL300629
Hard Disk (40 GB)		EL300730
512 MB Memory		EL300633

DocuPrint C3300 DX



DocuPrint C3300 DX Colour Printer High-performance colour laser for large enterprises



Descriptions in this material, product specifications and/or appearances are subject to change without prior notice due to improvements. Please note that the product colour appears differently from the actual colour as a result of properties of papers or printing ink. Windows and Windows NT are registered trademarks of Microsoft Corporation. NetWare is a registered trademark of Novell, Inc. in the United States. Mac OS and EtherTalk are trademarks of Apple Computer, Inc. PostScript is a registered trademark of Adobe Systems. Incorporated in each country. HP-GL is a registered trademark of Hewlett-Packard Company. BJLink is a trademark of the Japan Business Machine and Information System Industries Association (JBMA). Other company names or product names are registered trademarks or trademarks of each company.

Reproduction Prohibitions Please note that reproduction of the following is prohibited by law:
Domestic and overseas bank notes and coins, government-issued securities, national bonds and local bond certificates, unused postage stamps and post cards. Certificate stamps stipulated by law. The reproduction of works for copyright purposes (literary works, musical works, paintings, engravings, maps, cinematographic works, photographic works, etc.) is prohibited except when they are reproduced personally, at home or within limited range according to the above. This product is equipped with an anti-counterfeit feature. This feature is not intended to prevent illegal reproduction. Be extremely careful about the management of equipment used.

⚠ For Your Safe Use
Before using the product, read the Instruction Manual carefully for proper use.
Use the product with an appropriate adequate power source and voltage displayed. Be sure to establish a ground.
In the case of a failure or short circuit, an electric shock may result.

For more information or detailed product specifications, call or visit us at:

Fuji Xerox Asia Pacific Pte. Ltd. (993478-A)
(Fuji Xerox Printers)
Wisma Fuji Xerox,
1st Floor, No. 10, Jalan Bersatu 13/4,
46200 Petaling Jaya,
Selangor, Malaysia.
Tel: 03-7882 2888 Fax: 03-7882 2767

Service Hotline : 1800 88 1063
www.fujixeroxprinters.com.my



*XEROX, and the sphere of connectivity design are trademarks or registered trademarks of Xerox Corporation.

Superb quality and impressive performance for busy enterprises

Fast, super high-quality colour output, network ready, and loaded with features. Make your office run smoother with the high-performance DocuPrint C3300 DX. With features and functions designed to maximize productivity, this richly featured printer is the perfect match for fast-paced workgroups in large enterprises that require beautiful output and leading-edge performance.



Everything for busy enterprises

Out-of-box, the DocuPrint C3300 DX is ready to roll. You'll appreciate the built-in functionality that is usually optional on other printers in its class — everything you need to get the job done without worrying about expensive upgrades.

- **Duplex printing and 700-page media capacity** are standard — a winning combination for knocking out long, multi-page documents.
- **Administration tools** provide intuitive, browser-based configuration of printer settings and users.
- **Enterprise-level compatibility** allows easy rollout for printing in Citrix and SAP environments.

Crisp, professional-looking documents

High-resolution and superior colour combine to give your documents a polished look. Photos come to life with breathtaking clarity, while charts and graphs command special attention — a nice touch for the office that wants to look its best.

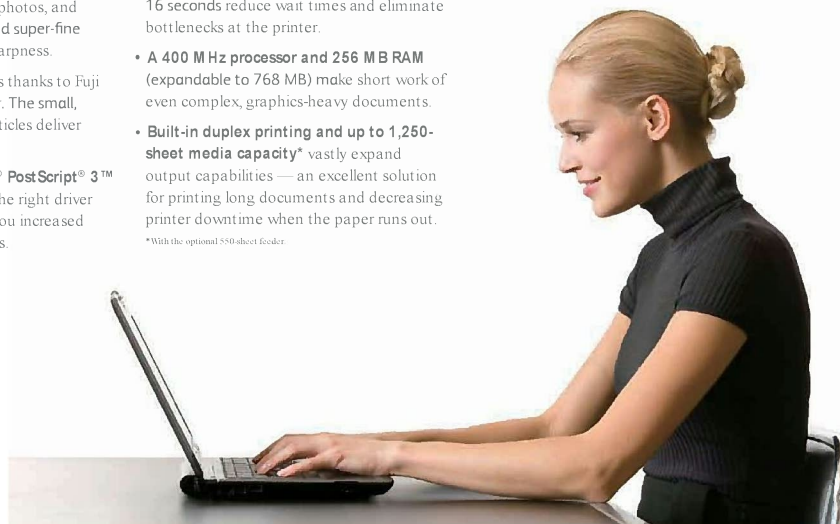
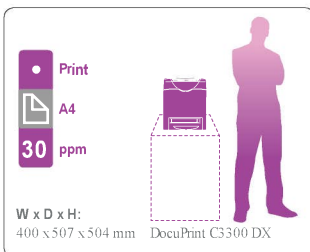
- **Razor-sharp printing at 1200 x 1200 dpi** produces crystal-clear text, photos, and graphics. Even small text and super-fine lines display exceptional sharpness.
- **Rich, vibrant colour** is yours thanks to Fuji Xerox's unique EA-HG toner. The small, uniformly shaped toner particles deliver breathtaking results.
- **Compatibility with Adobe® PostScript® 3™ and PCL6** lets you choose the right driver for the application, giving you increased control over print operations.

Performance-based functionality

Designed to satisfy the demanding needs of busy workgroups, the DocuPrint C3300 DX has the power for any office. Whatever the task, outstanding speed and responsiveness keep your office humming at peak productivity.

- **Lightning-quick 30 ppm output** and a fast, full-colour first-page-out-time of less than 16 seconds reduce wait times and eliminate bottlenecks at the printer.
- **A 400 MHz processor and 256 MB RAM** (expandable to 768 MB) make short work of even complex, graphics-heavy documents.
- **Built-in duplex printing and up to 1,250-sheet media capacity*** vastly expand output capabilities — an excellent solution for printing long documents and decreasing printer downtime when the paper runs out.

*With the optional 550-sheet feeder.



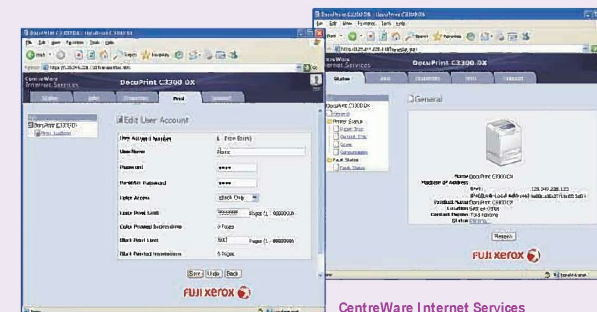
Effortless maintenance and administration

The DocuPrint C3300 DX is a joy for users and administrators alike. Replacing consumables is fast and straightforward while printer and user administration is point-and-click simple.



Easy front access

Consumables such as toner, fuser, and belt unit are all located under the top cover and easily accessed from the front. This intelligent design also reduces the space needed for installation.



Fuji Xerox Auditron

Keep track of printer usage and set user limits with this comprehensive set of management tools for network administrators.

CentreWare Internet Services

Simplify installation and configuration as well as obtain up-to-the-minute status reports with this browser-based software. Automatic e-mail alerts notify administrators or users of events that require attention, like low toner levels.

Comprehensive networking

Versatile connectivity and a host of privacy features make the DocuPrint C3300 DX the wise choice for today's complex, security conscious environments.

- **Multiple interfaces** allow connection to your existing office LAN via 100Base-TX/10Base-T or directly to a computer via USB 2.0.
- **Solid security features** provide everything you need to protect confidential data — both over office LANs and the Internet. Tools include IPv6+IPSec, IEEE802.1X authentication*, and SNMPv3 (for TCP/IP).

*Requires the optional hard disk.

Enterprise-wide operations

Full support for wide-area-network printing in ERP applications allows users to access the complete function set of the DocuPrint C3300 DX. Whether it's Citrix or SAP, Fuji Xerox ERP solutions assure you of the same feature-rich environment as when printing over the office LAN.

- **Print Utility for Citrix XenApp™** enables expanded Citrix printing with the DocuPrint C3300 DX. The latest release of the utility adds a variety of new features, providing enhanced usability and improved administration.
- **ApoosWare Device Type** enables the DocuPrint C3300 DX to be used in SAP R/3® or mySAP™ environments. Produce beautifully formatted reports, forms and barcodes, and simplify administrative chores with this software.



Environmentally conscious

Fuji Xerox shares your concern for the earth, and strives to minimize the environmental impact of all our activities. Our environmental responsibility covers the entire life of the DocuPrint C3300 DX, from manufacturing and operation, to production and recycling of consumables.

Oil-free and reduced CO₂ emissions

EA-HG toner used in the DocuPrint C3300 DX does not contain oil, helping to conserve this precious resource. Additionally, the amount of CO₂ emitted during manufacturing is reduced up to 35%, further decreasing environmental burden.

Power saving operation

The DocuPrint C3300 DX consumes only 7 W* of electricity per hour during sleep mode and has a highly efficient TEC (typical electricity consumption) of 2.351 kWh per week.

*For the 110-volt version 9 W for the 220-volt version.

Forest-friendly

Packaging for high-capacity (9,000-page) toner cartridges consumes 20% less paper than packaging for low-capacity cartridges used by some of our competitors. Like Fuji Xerox printing paper, this forest-friendly packaging utilizes recycled paper.

Certified energy efficient

The DocuPrint C3300 DX carries International Energy Star certification. Energy Star is a voluntary labelling program designed to identify and promote energy efficient products to reduce greenhouse gas emissions.

