



Blazing speed!
Cool price!
Easy to use!

Print. Copy. Fax. Scan.



THE DOCUMENT COMPANY
FUJI XEROX

Supplies

Description Order No.

All-in-One Cartridge: CWAA0683
SmartKit® Print Cartridge 3K @5%
ISO 19752

For more information or for
your nearest authorised
Fuji Xerox Printers reseller,
visit our web site or call:

Australia
1300 793 769

New Zealand
0800 993 769

China
(86) 10 5824 5000

Hong Kong
(852) 2 513 2646

Korea
(82) 2 528 5807

Malaysia
(60) 3 7957 9988

Singapore (ASEAN Headquarters)
(65) 6351 0118

Taiwan
(886) 2 8788 1758

Thailand
(66) 2 617 6700

Vietnam
(84) 8 829 0038

www.fxprinters.com



WorkCentre PE220
Multifunction Laser Printer

CONFIGURATIONS

	WorkCentre® PE220
Speed	Up to 20 ppm
Duty Cycle	Up to 5,000 pages/month
Paper Handling	
Paper input	150-sheet main tray, 1-sheet bypass tray
Automatic document feeder	30 sheets A4/Letter
Paper output	50 sheets, face down
Copy	
First-page-out time	11 seconds
Resolution	600 x 600 dpi
Copy features	2-up, 4-up, collation, auto-fit, clone, poster, multi-copy, ID card copy
Print	
Resolution	600 x 600 dpi
Processor/PDL GDI	GDI
Connectivity	USB 1.1 (compatible with USB 2.0), IEEE 1284 Parallel
Scan	
Resolution	600 x 600 dpi, up to 4800 x 4800 dpi enhanced
Fax	
Speed	3-second transmission speed at 33.6 Kbps
Resolution	203 x 98 dpi (Standard), 203 x 196 dpi (Fine/Photo), 300 x 300 dpi (Superfine), 200 x 200 dpi (Color)

SPECIFICATIONS

Copying

Speed: Up to 20 cpm Letter/A4
Resolution: 600 x 600 dpi
First Copy Out: 11 seconds

Printing

Technology: Laser black-and-white
Speed: 20 ppm Letter/A4
Resolution: 600 x 600 dpi
First Print Out: 11 seconds
Page Description Language (PDL): GDI
Memory: 10 MB
Print Drivers: Windows 95, 98, ME, 2000, XP, Mac OS 10.3, Linux
Interfaces: USB 1.1 (compatible with USB 2.0), IEEE 1284 Parallel

Scanning

Compatibility: TWAIN standard (Windows 98, ME, 2K, Mac, Linux), WIA standard (Windows XP)

Scan Resolution

Optical: 600 x 600 dpi
Enhanced: Up to 4800 x 4800 dpi

Depth

Color: 24-bit
Mono: 1-bit for line art, halftone
Grayscale: 8-bit

Bundled Scanning Software

PaperPort® SE 10.0
OmniPage® SE 3.0

Faxing

Compatibility: ITU-T Group 3, ECM
Transmission Speed: Approx. 3 seconds/page at 33.6 Kbps
Modem Speed: 33.6 Kbps
Data Compression: MH/MR/MMR, JPEG (color)
Memory: 2 MB (approximately 160 pages)*

Resolutions

Standard: 203 x 98 dpi
Fine: 203 x 196 dpi
Superfine: 300 x 300 dpi
Photo: 203 x 196 dpi
Color: 200 x 200 dpi

Media Handling

Input Paper Capacity

Main Tray: 150 sheets
Minimum size: 76 x 127 mm
Maximum size: 216 x 356 mm
Weight: 60 - 90 gsm

Bypass Tray: 1 sheet

Minimum size: 76 x 127 mm
Maximum size: 216 x 356 mm
Weight: 60 - 165 gsm

Document Handler: 30 Sheets

Width: 142 - 216 mm
Length: 148 - 356 mm
Weight: 60 - 90 gsm

Output Capacity: 50 sheets (face down)

Media Types: Plain paper, envelopes, labels, postcards, transparencies

Physical Dimensions (W x D x H)

438 x 374 x 368 mm
Weight: 10.4 kg

Operating Environment

Temperature
Maximum Range: 10° - 32°C
Recommended Range: 16° - 30°C

Humidity

Maximum Range: 20 - 80%
Recommended Range: 30 - 70%

Electrical

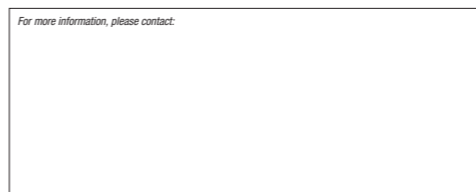
Power: 220-240 VAC, 50/60 Hz, 2.5 A
Maximum Power Consumption: 350 watts
ENERGY STAR® compliant

General Specifications

Memory: 16 MB
Device Management: ControlCentre™ 5.0
All-in-One Cartridge: SmartKit® Print Cartridge 3k @ 5% ISO19752
Duty Cycle: 5,000 (maximum)
Recommended Average Monthly Volume: Up to 750 pages
Safety Agency Approvals: UL Safety and ETL Semko

*Based on CCIT No. 1 chart at standard resolution.

For more information, please contact:



THE DOCUMENT COMPANY
FUJI XEROX



WorkCentre PE220
Multifunction Laser Printer

print | copy | scan | fax



One Box
Is All You Need.
WorkCentre PE220 Multifunction Laser Printer



©2005 Fuji Xerox Printers. All rights reserved. Contents of this publication may not be reproduced without permission of Fuji Xerox Printers. Xerox, The Document Company, the stylized X, Phaser, ControlCentre and PhaseSmart are registered trademarks/trademarks of Xerox Corporation. All other names mentioned are trademarks of their respective companies. The information in this brochure is subject to change without notice. Errors and omissions excepted. Fuji Xerox Printers practice a policy of continued product development, this means that product specifications may incorporate innovations and/or enhancements resulting from ongoing research & development and may vary from those specified in brochures at time of printing. In buying with normally accepted commercial practices, the purchaser is advised to both confirm product specifications, and satisfy themselves as to product performance and exact configuration (to suit each particular requirement) before purchase. Fuji Xerox Printers will not accept any liability (product related and/or resulting from product usage) where such due diligence has not been performed and the incorrect product has been purchased.

Fuji Xerox Printers



WorkCentre PE220

Multi-function Laser Printer

print | copy | scan | fax

All You Need to Do It All.

The new WorkCentre PE220 performs any job fast. A new, easy-to-use interface puts control of essential features right at your fingertips. Get all the functions of a printer, copier, scanner, and fax in one hard-working package at a price you can afford.

The WorkCentre PE220. The wise choice for a fast and efficient multifunction laser printer that fits in anywhere.

Sharp Laser Prints

- Fast 20 prints-per-minute
- True 600 x 600 dpi
- Multi-platform compatibility (Windows, Macintosh, and Linux)
- First-print-out-time of 11 seconds

Clean Digital Copies

- Fast 20 copies-per-minute
- 30-sheet Automatic Document Feeder
- Scan-once-print-many
- Electronic collation
- First-copy-out-time of 11 seconds

Beautiful Color Scans

- Up to 4800 x 4800 dpi resolution*
- Scan to PC via USB or parallel
- Document management and OCR software included

*Enhanced mode

Fast Laser Faxes

- Fast 3-second/page sending at 33.6 Kbps
- Send color faxes
- 72-hour power back-up



The perfect partner for you or your office.

The new WorkCentre PE220 has the features and speed for any work environment. Combining four-function versatility and desktop convenience with superb ease-of-use, the WorkCentre PE220 is loaded with timesaving and innovative features at a very affordable price.



Big performance in a small fit

The space saving design of the WorkCentre PE220 allows it to fit into just about any work environment making it ideal for:

- Small businesses
- Small workgroups
- Branch offices
- Individual users



Clean, efficient laser printing

At print speeds of up to 20 ppm* the WorkCentre PE220 keeps your office humming. Produce razor-sharp grayscale laser prints at a true 600 x 600 dpi. The perfect printer for presentation-quality reports, OHPs, and other business documents.

*A4-size document



COPY

Razor sharp copying

Copies never looked so good and copying was never so fast. Scan once and make up to 99 copies from a single document at up to 20 cpm. The WorkCentre PE220 also comes with two great new features – ID Copy and Auto-Fit.

- ID Copy automatically prints both sides of a business card, ID card, or other small, two-sided document on the same side of a page.
- Auto-Fit ensures no paper wastage by automatically reducing or enlarging the original to fill the entire printable area of the paper.

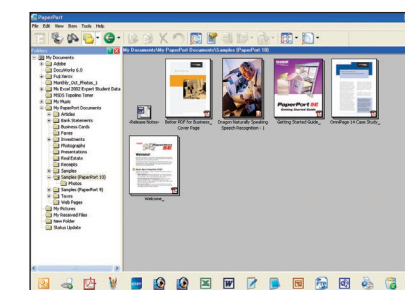


SCAN

Great color and monochrome scanning

The 24-bit color and 8-bit grayscale 600 x 600 dpi scanner* reveals every nuance of your originals. For easy scanning and document management the WorkCentre PE220 comes with ScanSoft PaperPort® SE 10.0 and OmniPage® SE 3.0. Additionally, the WorkCentre PE220 is TWAIN compatible for Windows 98/ME/2000, Macintosh, and Linux and Windows Image Acquisition (WIA) compatible for Windows XP.

*4800 x 4800 dpi enhanced



FAX

Full-featured fax capability

The WorkCentre PE220 makes faxing quick and easy. Send faxes at speeds of up to 3 seconds per page. Store up to 160 pages in the roomy 2 MB fax memory. A variety of resolution modes are provided for any kind of document (Standard, Fine, Superfine, Photo, and Color). You'll also appreciate the included ControlCentre 5.0 software that makes fax set up and configuration a breeze. Use the ADF for single sheets up to 8.5" x 14" or send bound documents from the flat-bed scanner.

